

BELIEVE IN BETTER

It's  
Only  
Natural



## SINCE 2007

AAA Natural Stone has mined and marketed natural limestone and sandstone veneer from the company-owned quarry just a stones throw from Austin, Texas. AAA also creates and markets an exceptional collection of natural stone veneer from other quarries located throughout the southern U.S.

We fabricate the best of what Texas offers. Natural Stone, Thin Veneer, Architectural Cut Stone Accessories, Slabs and Stone for landscape specification. Residential, Commercial, Institutional and Hospitality. Inside or out. All day. Every day.

Our expertise is unmatched. And consistency is the philosophical bedrock of our stone selection. We hand curate every one of our products, so they exceed our customer's expectations.

It's not enough to be satisfied with what we have achieved. We continue to strive to find and create products that reach the highest levels of craftsmanship; natural stone that we'd celebrate in our own homes.

**BELIEVE IN BETTER. IT'S ONLY NATURAL.**

<b>PAGE 08</b>	<b>AMERICAN MODERN COLLECTION</b>
10	Neo Ledge: Split
14	Neo Ledge: Sawn
18	Neo Planks
22	Recs
26	Pillowed Ledge
<b>PAGE 30</b>	<b>CLASSIC COLLECTION</b>
32	Rubble
40	Traditional
<b>PAGE 46</b>	<b>LANDSCAPE COLLECTION</b>
48	Mosaic Patio Slabs
50	Paving & Tile
52	Travertine
<b>PAGE 56</b>	<b>CUSTOM ARCHITECTURAL CUT STONE</b>

**UNCOVERING THE BEAUTY THAT IS TEXAS LIMESTONE** Texas geology is distinct. Layered rock exposures contain enormous deposits of Limestone which is a sedimentary carbonate rock primarily composed of calcite and aragonite minerals, and the skeletal fragments of marine organisms.

**THE WORLD'S INCOMPARABLE BUILDING PRODUCT** Precambrian metamorphic and igneous rock forms the "bedrock complex" underneath Texas. Limestone became the "parent" bedrock below the Texas grassland ecosystem's soil layers.



**4.5 BILLION YEARS AGO**  
Dust and debris accretion accelerated the metamorphic rock mountain formation associated with large-scale movements of the Earth's crust.



**600 MILLION YEARS AGO**  
Pre-Cambrian era Texas was the floor of the Panthalassa superocean that surrounded the supercontinent Pangaea and the Gulf of Mexico was a mountain range. Tectonic plate shifts caused Texas to rise while the Gulf of Mexico began to sink.



**300 MILLION YEARS AGO**  
The Pangea land mass continued shifting and separating, and over time, Limestone composed of skeletal fragments and minerals, was deposited as a result of sea level fluctuations.



**PRESENT DAY**  
Limestone is a hard, durable and easily accessible carbonate sedimentary rock. It's a popular building material for cladding, paving and walls. Limestone is also an admixture for cement, mortar and asphalt concrete, as well as an ingredient used for soil conditioners and paint pigments.



*“Every sunset brings the promise  
of a new dawn.”*

— RALPH WALDO EMERSON

PHOTO BY ERIC FIGGE

ABOVE: CAPPUCCINO RUBBLE INSTALLED WITH A MORTAR WASH TECHNIQUE

PHOTO BY JAKE OLSEN



CAMILLA NEO LEDGE: SPLIT INSTALLED DRYSTACKED

AMERICAN

STYLISH & FUNCTIONAL

MODERN

MINIMAL & SOPHISTICATED

COLLECTION

CLEAN & STREAMLINED



# Neo Ledge: Split

CAMILLA NEO LEDGE: SPLIT INSTALLED DRYSTACKED

PHOTO BY JAKE OLSEN

## NEO LEDGE: SPLIT



Camilla NEO LEDGE: SPLIT



Maya NEO LEDGE: SPLIT




Nadia NEO LEDGE: SPLIT

**STANDARD SIZES:**  
 2" high x 8" - 18" lengths  
 4" high x 8" - 18" lengths  
 6" high x 8" - 18" lengths  
 8.5" high x 8" - 18" lengths

Random lengths shipped.

Random heights can also be mixed and shipped upon request. Custom heights and lengths available upon request.

**CORNERS:**  
 All standard profiles have matching corners with 6" -12" lengths and 3"- 5" returns.




Stella NEO LEDGE: SPLIT

NEO LEDGE: SPLIT



STELLA NEO LEDGE: SPLIT INSTALLED WITH A STANDARD RAKED MORTAR JOINT



CAMILLA NEO LEDGE: SPLIT INSTALLED DRYSTACKED



PHOTO BY JAKE OLSEN

STELLA NEO LEDGE: SPLIT INSTALLED DRYSTACKED

MAYA NEO LEDGE: SAWN INSTALLED DRYSTACKED

PHOTO BY VAUGHN DEWITT



# NEO Ledge Sawn

## NEO LEDGE: SAWN



Camilla NEO LEDGE: SAWN



Maya NEO LEDGE: SAWN



Nadia NEO LEDGE: SAWN

### STANDARD SIZES:

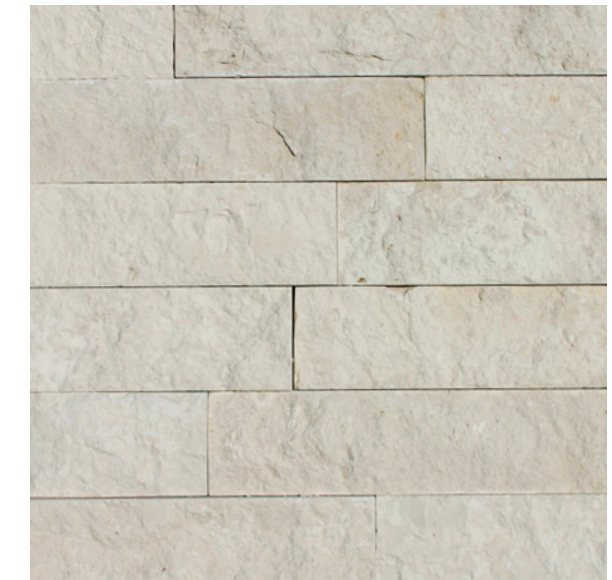
- 2" high x 8" - 18" lengths
- 4" high x 8" - 18" lengths
- 6" high x 8" - 18" lengths
- 8.5" high x 8" - 18" lengths

Random lengths shipped.

Random heights can also be mixed and shipped upon request. Custom heights and lengths available upon request.

### CORNERS:

All standard profiles have matching corners with 6" - 11" lengths and 3" - 5" returns.



Stella NEO LEDGE: SAWN



*“When I think ‘modern’ I always think ‘clean.’  
But, ‘clean’ is always better when it’s a  
little rough around the edges.”*

— VAUGHN DEWITT

MAYA NEO LEDGE: SAWN INSTALLED DRYSTACKED

PHOTO BY VAUGHN DEWITT

## NEO LEDGE: SAWN



NADIA NEO LEDGE: SAWN INSTALLED DRYSTACKED

# Neo Planks



CAMILLA NEO PLANKS-INSTALLED WITH A STANDARD RAKED MORTAR JOINT

## NEO PLANKS



Camilla NEO PLANKS  
All shown with Honed Finish



Maya NEO PLANKS



Nadia NEO PLANKS



Stella NEO PLANKS

### STANDARD SIZES:

- 2" high x 12"- 24" lengths
- 4" high x 12"- 36" lengths
- 6" high x 12"- 36" lengths
- 8" high x 12"- 48" lengths
- 10" high x 12"- 48" lengths
- 12" high x 12"- 48" lengths
- 16" high x 16"- 48" lengths
- 18" high x 18"- 48" lengths
- 24" high x 24"- 48" lengths

### CORNERS:

We modify flats with a 45 degree miter or quirk miter as a corner treatment.

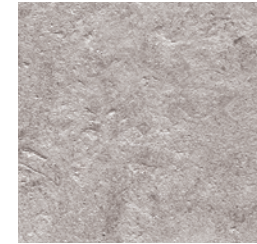
### STANDARD THICKNESS:

- 0.75" 1.0" 1.25" 1.5" 2.25" 3.0" 4.0"

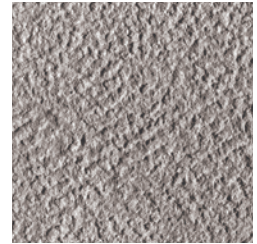
Shipped in random lengths with Honed Finish. Custom heights and lengths available upon request.

Brushed, Bush Hammered and Sawn custom finishes available upon request.

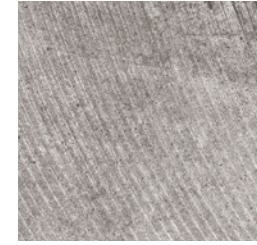
### ADDITIONAL CUSTOM FINISHES:



Brushed



Bush Hammered



Sawn



STELLA NEO PLANKS INSTALLED DRYSTACKED

PHOTO BY VAUGHN DEWITT

## NEO PLANKS



NADIA NEO PLANKS INSTALLED WITH A FLUSH MORTAR JOINT

AZUPA RECS WITH A MORTAR WASH TECHNIQUE

# RECS

PHOTO BY ZAC TITUS

## RECS



Afina RECS



Azura RECS



Bella RECS



Camilla RECS



Luna RECS

**STANDARD SIZES:**  
Shipped in random lengths and heights from 3"-10"

**CORNERS:**  
All standard profiles have matching corners with 6" -12" lengths and 3" - 5" returns.



*"It's a beautiful day in the neighborhood."*

— MR ROGERS



PHOTO BY ERIC FIGGE

LEFT: RHINESTONE RUBBLE MIDDLE: HONEY BUFF RUBBLE RIGHT: TUNDRA CREAM RUBBLE ALL: INSTALLED WITH A MORTAR WASH TECHNIQUE

# Pillow edge



CAMILLA PILLOWED LEDGE INSTALLED DRYSTACKED

## PILLOWED LEDGE



Camilla PILLOWED LEDGE



Maya PILLOWED LEDGE



Nadia PILLOWED LEDGE



Stella PILLOWED LEDGE

### STANDARD SIZES:

4" high x 8" -18" lengths

6" high x 8" -18" lengths

8.5" high x 8" -18" lengths

### CORNERS:

All standard profiles have matching corners with 6" -12" lengths and 3" - 5" returns.



Random lengths shipped.

Random heights can also be mixed and shipped upon request. Custom heights and lengths available upon request.

PILLOWED LEDGE



CAMILLA PILLOWED LEDGE INSTALLED DRYSTACKED



ALL: NADIA PILLOWED LEDGE INSTALLED DRYSTACKED



TUNDRA CREAM RUBBLE INSTALLED WITH A MORTAR WASH TECHNIQUE



PHOTO BY ERIC FIGGE

# Classic Collection

Defining classic architectural style is elusive. Identifying traits and details depends on locale, historic characteristics and aesthetic interpretation among many other attributes. One enduring aspect of any classic style, however, is natural stone. Its use on exteriors and interiors remains unquestionably a commanding testimony of choice.





CAPPUCCINO RUBBLE INSTALLED WITH A MORTAR WASH TECHNIQUE

PHOTO BY ERIC FIGGE

# Rubble

## RUBBLE



Ashwood RUBBLE



Blanco RUBBLE



Cappuccino RUBBLE



Cottage Cream RUBBLE



Honey Buff RUBBLE



Mocha Shell RUBBLE

**STANDARD SIZES:**  
Shipped in random lengths and heights from 3" -10"

**CORNERS:**  
All standard profiles have matching corners with 6" -12" length and 3"- 5" returns.



RUBBLE



Montgomery Gold RUBBLE



Regent Buff RUBBLE



Rhinestone RUBBLE



Sable Ridge RUBBLE



Tundra Cream RUBBLE



Tuscan Blend RUBBLE

**STANDARD SIZES:**

Shipped in random lengths and heights from 3" -10"

**CORNERS:**

All standard profiles have matching corners with 6" -12" length and 3" - 5" returns.



PHOTO BY ZAC TITUS

RHINESTONE RUBBLE INSTALLED WITH A MORTAR WASH TECHNIQUE

## RUBBLE

THE TIME OF DAY AND THE WEATHER. THE STONE'S TEXTURE AND HOW IT IS INSTALLED. SHADOWS, FULL SUNLIGHT — EVEN MOTHER NATURE'S UNPREDICTABILITY. ALL THESE FACTORS AFFECT THE PERCEPTION OF COLOR. BUT, THESE BEAUTIFUL VARIATIONS ARE WHAT MAKES NATURAL STONE SO ENCHANTING.



“AAA's promise: 'It's Only Natural',  
is more than a declaration  
of what we sell...it is by definition,  
the spirit and soul  
of everyone here at the company.”

— JESSICA WIRTH —

ABOVE: HONEY BUFF RUBBLE INSTALLED WITH A MORTAR WASH TECHNIQUE RIGHT: TUSCAN BLEND RUBBLE WITH NO-RAKE MORTAR JOINT

# RUBBLE

MONTGOMERY GOLD RUBBLE INSTALLED WITH A STANDARD RAKED MORTAR JOINT



TUNDRA CREAM RUBBLE INSTALLED WITH A MORTAR WASH TECHNIQUE



TUSCAN BLEND RUBBLE WITH NO-RAKE MORTAR JOINT



TUSCAN BLEND RUBBLE INSTALLED WITH A STANDARD RAKED MORTAR JOINT



REGENT BUFF RUBBLE INSTALLED WITH A MORTAR WASH TECHNIQUE

RHINESTONE RUBBLE INSTALLED WITH A MORTAR WASH TECHNIQUE



PHOTO BY ERIC FIGGE

COTTAGE CREAM TRADITIONAL INSTALLED WITH A STANDARD RAKED MORTAR JOINT



PHOTO BY ZAC TITUS

## TRADITIONAL



Archaic TRADITIONAL



Blanco TRADITIONAL



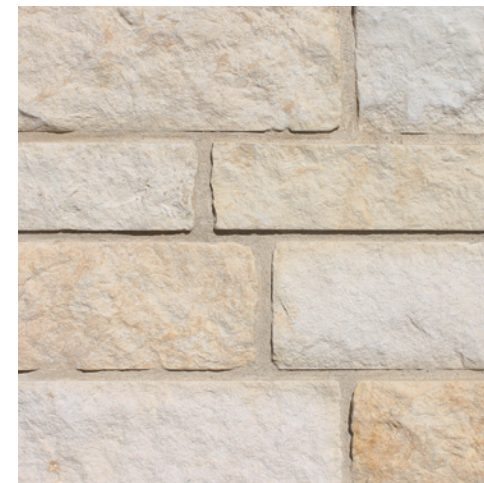
Blanco Antique TRADITIONAL



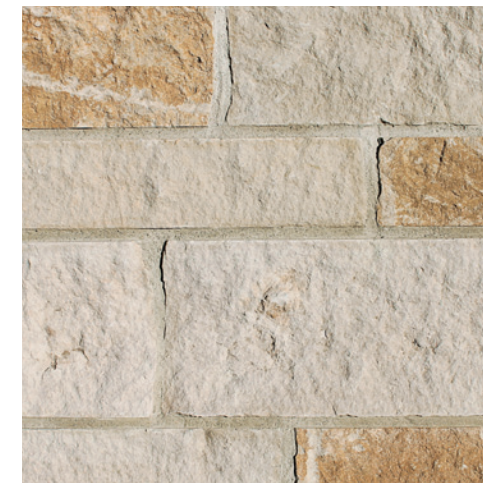
Copper Canyon TRADITIONAL



Cottage Cream TRADITIONAL



Cream TRADITIONAL



Honey Buff TRADITIONAL

**STANDARD SIZES:**  
Shipped with 1/3 equal amounts 4", 6" and 8.5" heights and random lengths.

**CORNERS:**  
All standard profiles have matching corners with 6" -12" lengths and 3"- 5" returns.



**CUSTOM SIZES:**  
Available in heights ranging from 4"-12" and random lengths.

TRADITIONAL



Mission Blue TRADITIONAL



Montgomery Gold TRADITIONAL



Picasso TRADITIONAL



Platinum TRADITIONAL



Regent Buff TRADITIONAL



Tahoe TRADITIONAL



Toscano TRADITIONAL

TRADITIONAL



TOSCANO TRADITIONAL INSTALLED DRYSTACKED

PHOTO BY ZAC TITUS

STANDARD SIZES:

Shipped with 1/3 equal amounts 4", 6" and 8.5" heights and random lengths.

CORNERS:

All standard profiles have matching corners with 6" -12" lengths and 3" - 5" returns.

CUSTOM SIZES:

Available in heights ranging from 4" - 12" and random lengths.





VISIT  
FOR MORE INFO  
AAA-NATURALSTONE.COM

ALL COTTAGE CREAM TRADITIONAL INSTALLED  
WITH A STANDARD RAKED MORTAR JOINT

PHOTOS BY ZAC TITLUS

*“‘Classic’ and ‘Traditional’. Common words certainly, but always relevant because they are so descriptive. Everyone agrees they define time-honored excellence.”*

— MIKE MOSEID



PHOTO BY LIBBY BALLENGEE

VAN BUREN TRAVERTINE WITH CREAM CUSTOM RADIUS BULLNOSE COPING

# Landscape

Attractive landscape harmony trusts the strong, visual statement of natural stone. The verdant ornamental features of a tree, a bush, flowering blossoms, lawn and water, yield to mother nature's building block to create impact and a focal point of charm and beauty.

# Collection



# Mosaic Patio Slabs

ON-SITE BLEND OF REGENT BUFF AND PLATINUM MOSAIC PATIO SLABS WITH PLATINUM CUSTOM RADIUS BULLNOSE COPING

## MOSAIC PATIO SLABS



Blanco MOSAIC PATIO SLABS  
All shown with Honed finish



Cream MOSAIC PATIO SLABS



Platinum MOSAIC PATIO SLABS



Regent Buff MOSAIC PATIO SLABS

### STANDARD SIZES:

24" - 26" wide

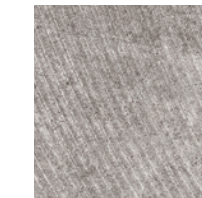
50" - 60" long

1.25" - 2.25" thick

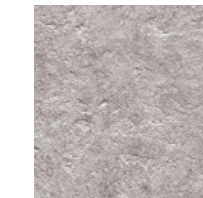
Shipped with Sawn Finish.

Brushed, Bush Hammered and Honed finishes available upon request.

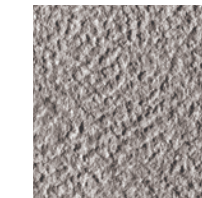
### ADDITIONAL FINISHES:



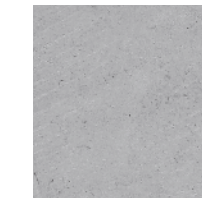
Sawn  
Mosaic Patio Slabs  
shipped with Sawn  
finish unless otherwise  
specified.



Brushed



Bush Hammered



Honed



# Paving & Tile

APPIAN WAY PAVING & TILE

## PAVING & TILE



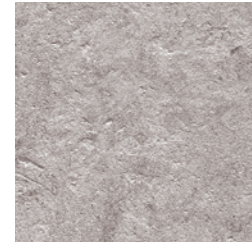
Appian Way PAVING & TILE  
All shown with standard Honed finish



Blanco PAVING & TILE



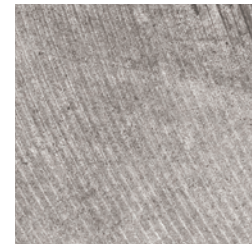
Cream PAVING & TILE



Brushed



Bush Hammered



Sawn  
Additional Custom Finishes



Platinum PAVING & TILE



Regent Buff PAVING & TILE

### STANDARD SIZES:

12" wide x 12" - 48" lengths  
16" wide x 16" - 48" lengths  
18" wide x 18" - 48" lengths  
24" wide x 24" - 48" lengths

### STANDARD THICKNESS:

0.75" 1.0" 1.25" 1.5" 2.25"  
3.0" 4.0"

Shipped with Honed Finish.

Brushed, Bush Hammered and Sawn custom finishes available upon request.



PHOTO BY ZAC TITUS

# Travertine

KALAHARI TRAVERTINE WITH KALAHARI BULLNOSE COPING

## TRAVERTINE



Argento TRAVERTINE



Constantine TRAVERTINE



Delphine TRAVERTINE



Kalahari TRAVERTINE



Macchiato TRAVERTINE



Mojave TRAVERTINE

## TRAVERTINE



Silvio TRAVERTINE



Tandoori TRAVERTINE



Tusk TRAVERTINE



Van Buren TRAVERTINE



Van Buren Blend TRAVERTINE

## TRAVERTINE

### STANDARD FRENCH PAVING

Single crate = 176 s.f.  
Each crate has 22 "sets"

(2) "sets" comprise French Pattern layout. Each single "set" includes:

- (1) 16" x 24" tile
- (2) 16" x 16" tiles
- (1) 8" x 16" tile
- (2) 8" x 8" tiles

### ADDITIONAL STANDARD PAVING

- 6" x 12"
- 12" x 12"
- 12" x 24"
- 24" x 24"
- 24" x 36"

### PAVING THICKNESS

1.25"

Custom sizes upon request.

Shipped with Tumbled Finish except Mojave which is shipped with Honed and Filled Finish.

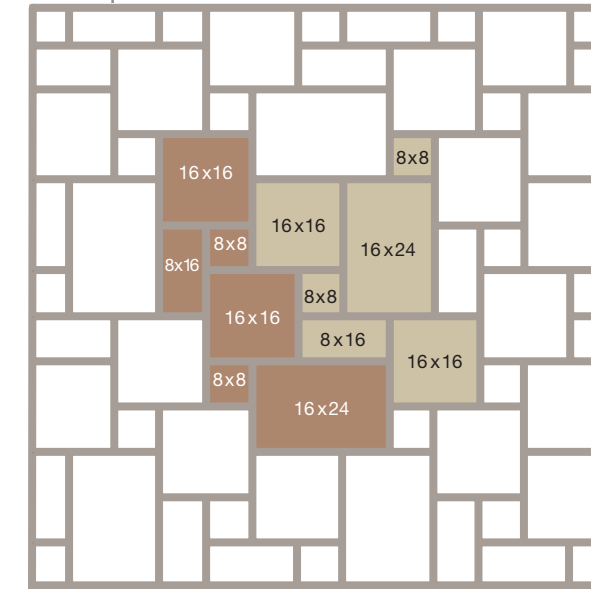
### BULLNOSE COPING

- 12" wide x 24" long x 2" thick
- 12" wide x 24" long x 1.25" thick

Single crate of 2" thick coping =  
80 s.f. / 40 pieces

Single crate of 1.25" thick coping =  
132 s.f. / 66 pieces

Bullnose Coping shipped with Honed and Unfilled Finish.



2 "sets"—6 tiles in each set—creates a standard French Pattern.



Tandoori TRAVERTINE Custom Order 18" x 24"



Kalahari TRAVERTINE French Pattern

Argento TRAVERTINE French Pattern





# Custom Architectural Cut Stone

HEARTHSTONE: CUSTOM-CUT REGENT BUFF FIREPLACE: NADIA PILLOWED LEDGE INSTALLED DRYSTACKED

PHOTO BY VAUGHN DEWITT

## CUSTOM ARCHITECTURAL CUT STONE ACCESSORIES



Blanco ARCHITECTURAL CUT STONE  
All shown with standard Honed finish



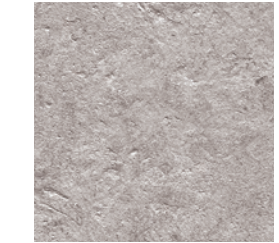
Cream ARCHITECTURAL CUT STONE



Platinum ARCHITECTURAL CUT STONE



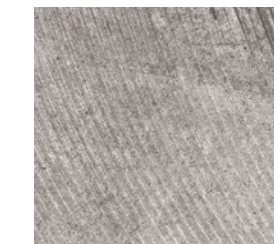
Regent Buff ARCHITECTURAL CUT STONE



Brushed

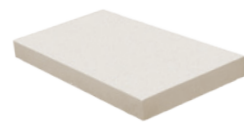


Bush Hammered

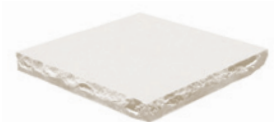


Sawn  
Additional Custom Finishes

CUSTOM ARCHITECTURAL CUT STONE ACCESSORIES



Wall Caps and Coping



Column Caps



Hearthstones and Lintels

WALL CAPS, COLUMN CAPS AND COPING

10" - 24" widths  
24" - 48" lengths  
1.5" - 4" thick

SILLS

2" - 8" widths  
24" - 48" lengths  
2" - 8" thick

LINTELS

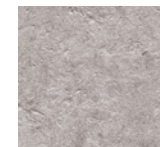
4" - 24" widths  
24" - 48" lengths  
1.5" - 4" thick

HEARTH STONES

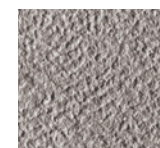
Custom cut and finished to your specifications.

Shipped with Honed Finish. Brushed, Bush Hammered and Sawn custom finishes available upon request.

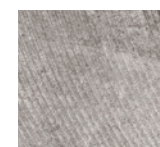
Additional Custom Finishes



Brushed



Bush Hammered



Sawn

EDGE DETAILS



Chamfered Edge

Eased Edge

Sawn Edge

Sloped Edge

Split Edge



ABOVE: WALL CAP AND COPING WITH CUSTOM RADIUS BELOW: LINTELS



PHOTO BY ZAC TITUS



BLANCO CUSTOM HEARTHSTONE AND FIREPLACE SURROUND

*“Stone is a remarkable opening  
and closing statement.  
Use it whenever you can.”*

— BARRY PARK

HONEY BUFF RUBBLE INSTALLED WITH A  
MORTAR WASH TECHNIQUE



PHOTO BY ERIC FIGGE

CHARTER MEMBER



STONE GENESIS  
GROUP

Stone Genesis Group is a natural stone sales and marketing agency that *Uncovers Opportunities and Crushes the Competition*. Become a Member to take your product beyond the quarry floor and your sales to the stratosphere.

Dig deeper for more information

[StoneGenesisGroup.com](https://StoneGenesisGroup.com)

AAA Natural Stone will sell stone to users in most climates, if the owner/installer understands and agrees that performance of any natural stone in any exterior installation is the responsibility of the purchaser and their agents. As a natural product, AAA Natural Stone does not ‘engineer’ stone for specific environments and/or applications, so it is the client's sole responsibility to determine if any natural stone will perform effectively for their purpose. For instance, natural stones that do not test well under many freeze-thaw cycles may do well in a subfreezing climate if there is little precipitation. Performance can also be impacted greatly by factors such as installation orientation (horizontal vs vertical), or the use of sealers to repel moisture or reduce absorption. If you absolutely love a particular type of stone for a particular application, we highly recommend consulting with your architect and/or contractor and reaching out to a company that manufactures natural stone sealers to understand which products and application processes will help your project endure.

© 2023 AAA Natural Stone, LLC

**NOTE:** AAA Natural Stone is Mother Nature's unequalled masterwork. Variations in photography, printing and Mother Nature's own judgment can occur so please ask for product samples before purchasing.



1005 N. Highway 183, Liberty Hill, TX 78642  
info @ aaa-naturalstone.com

877 862 5294